

# Scale Sheet

Premier -- cellos

$\text{♩} = 80$

C Major

Musical notation for the C Major scale in bass clef, 4/4 time signature. The scale is written in a single line, starting on middle C (C4) and ascending to C5, then descending back to C4. The notes are: C4, D4, E4, F4, G4, A4, B4, C5, B4, A4, G4, F4, E4, D4, C4. The piece concludes with a double bar line and a repeat sign.

F Major

Musical notation for the F Major scale in bass clef, 4/4 time signature. The scale is written in a single line, starting on F3 and ascending to F4, then descending back to F3. The notes are: F3, G3, A3, Bb3, C4, D4, E4, F4, E4, D4, C4, Bb3, A3, G3, F3. The piece concludes with a double bar line and a repeat sign.

B-flat Major

Musical notation for the B-flat Major scale in bass clef, 4/4 time signature. The scale is written in a single line, starting on Bb2 and ascending to Bb3, then descending back to Bb2. The notes are: Bb2, C3, D3, Eb3, F3, G3, Ab3, Bb3, Ab3, G3, F3, Eb3, D3, C3, Bb2. The piece concludes with a double bar line and a repeat sign.

E-flat Major

Musical notation for the E-flat Major scale in bass clef, 4/4 time signature. The scale is written in a single line, starting on Eb2 and ascending to Eb3, then descending back to Eb2. The notes are: Eb2, F2, G2, Ab2, Bb2, C3, D3, Eb3, D3, C3, Bb2, Ab2, G2, F2, Eb2. The piece concludes with a double bar line and a repeat sign.

G Major

Musical notation for the G Major scale in bass clef, 4/4 time signature. The scale is written in a single line, starting on G2 and ascending to G3, then descending back to G2. The notes are: G2, A2, B2, C3, D3, E3, F#3, G3, F#3, E3, D3, C3, B2, A2, G2. The piece concludes with a double bar line and a repeat sign.

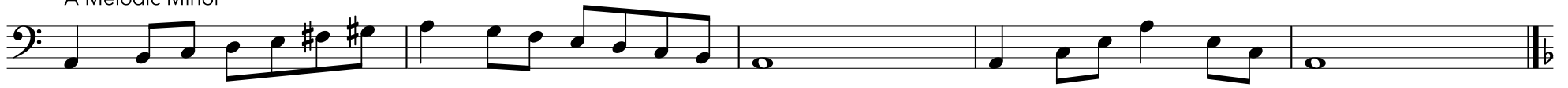
D Major

Musical notation for the D Major scale in bass clef, 4/4 time signature. The scale is written in a single line, starting on D2 and ascending to D3, then descending back to D2. The notes are: D2, E2, F#2, G2, A2, B2, C#2, D3, C#2, B2, A2, G2, F#2, E2, D2. The piece concludes with a double bar line and a repeat sign.

A Major

Musical notation for the A Major scale in bass clef, 4/4 time signature. The scale is written in a single line, starting on A1 and ascending to A2, then descending back to A1. The notes are: A1, B1, C#1, D1, E1, F#1, G#1, A2, G#1, F#1, E1, D1, C#1, B1, A1. The piece concludes with a double bar line and a repeat sign.

A Melodic Minor



D Melodic Minor



G Melodic Minor

